

## RENNES SCHOOL OF BUSINESS



Erasmus code: FRENNES27

2, Rue Robert d'Arbrissel  
35065 Rennes - France  
+33.(0)2.99.54.63.63

Website: [www.rennes-sb.com/](http://www.rennes-sb.com/)

Website for incoming students: [www.rennes-businessschool.com/onboarding/](http://www.rennes-businessschool.com/onboarding/)

Twitter: <https://twitter.com/rennessb>

Facebook: <https://www.facebook.com/bde.esrennes/>

Video of the school: <https://youtu.be/iueaYNn-RhY>

## Contacts

**Zone 1: North America + South America + India:** Amparo REIG MARTINEZ - [amparo.reig-martinez@rennes-sb.com](mailto:amparo.reig-martinez@rennes-sb.com)

**Zone 2: Northern Europe:** Laëtitia MADELINE - [laetitia.madeline@rennes-sb.com](mailto:laetitia.madeline@rennes-sb.com)

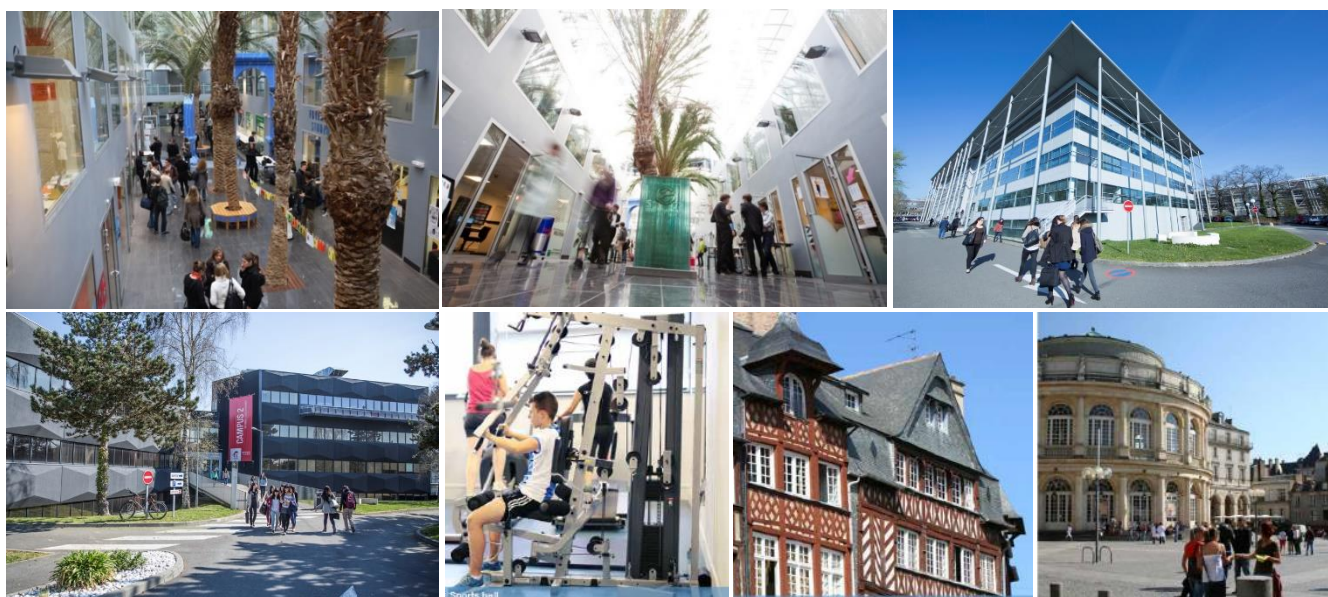
**Zone 3: Southern Europe + Africa:** Bénédicte MORTIER - [benedicte.mortier@rennes-sb.com](mailto:benedicte.mortier@rennes-sb.com)

**Zone 4: Oceania + Asia:** Margaux BRUNO - [margaux.bruno@rennes-sb.com](mailto:margaux.bruno@rennes-sb.com)

**International Studies Coordinator:** Elodie SAINT-YVES - [elodie.saint-yves@rennes-sb.com](mailto:elodie.saint-yves@rennes-sb.com)

**International Partnership / Agreement :** Magali FELIN - [magali.felin@rennes-sb.com](mailto:magali.felin@rennes-sb.com)

**Short-term Programmes:** Laura MEUNIER - [laura.meunier@rennes-sb.com](mailto:laura.meunier@rennes-sb.com)



## Exchange programmes

### Study programmes taught in English :

#### ❖ Transfer of credits

- Undergraduate Programme level 3
- Undergraduate Programme level 4
- Postgraduate Programme level 5

#### ❖ Double degree

- International Bachelor Programme in Management (IBPM)
- Master in Management

### Study programme taught in French :

Undergraduate Programme level 3

Summer Programme on Responsible Management (taught in English): <https://www.rennes-sb.com/programmes/summer-programme/>

Course offering : <https://www.rennes-sb.com/programmes/exchange-programme/>

Detailed list of courses available upon request.

## Academic calendar 2017 / 2018

### Fall semester:

Beginning of September 2017 – End of December 2017

### Spring semester:

- Undergraduate level 4 and Postgraduate level 5: Beginning of January 2018 – End of April 2018
- Undergraduate level 3 and double-degree IBPM: End of January 2018 – Beginning of May 2018

### Orientation Week – **COMPULSORY** for all international students

The International Relations Office provides an orientation programme for all International students the week before classes start. Sessions are **compulsory** and cover information on application for residence permit, health insurance, banking, internet provider, mobile phones, bus pass, academic expectations and standards.

## Deadlines

### For the nomination of exchange students :

Fall semester: 20 May 2017 and Spring semester: 15 October 2017

### For the receipt of applications and other documents of exchange students :

Fall semester: 31 May 2017 and Spring semester: 20 October 2017

**ONLY complete application packs** sent by the Home institution will be accepted.

Application form and supporting documents are to be sent by post.

## Application requirements

✓ **Undergraduate credit transfer students:**

120 ECTS credits (2 years minimum) of studies in Business are required to be accepted at undergraduate level.

✓ **Postgraduate credit transfer students:**

Students must have obtained the level "L" (BA, *Licenciatura*, etc) or at least the equivalent of 180 ECTS in Business Studies (3 years of studies in Business minimum).

✓ **Double degree students:**

- International Bachelor Programme in Management (IBPM): 120 ECTS credits (2 years minimum) of studies in Business, ideally for students in the last year of the Bachelor degree.
- Master in Management (PGE) students must have obtained the level "L" (BA, *Licenciatura*, etc) equivalent to 120 ECTS minimum.

## Language requirement in English

✓ **Students on transfer of credits:**

The level of English is left up to evaluation of the home university (we ask the home institution to provide a certificate confirming a B2 level in English – or equivalent TOEFL, which is sufficient to take classes at Rennes School of Business). All or most classes are conducted in English, therefore students are expected to have a sufficient command of the English language to be capable of understanding, making oral presentations, writing reports and exams.

✓ **Students on double Degree:**

English language test required (except for native English speakers): TOEFL, TOEIC, IELTS (TOEFL: IBT = 79, computer based = 213, paper based = 550; TOEIC = 750; IELTS = 6.5 depending on the programme).

No French test required (unless electives in French are chosen, a B2 level in French will be required).

## Course registration

- Students are asked to complete course registration on line before their arrival in Rennes (in June for fall semester and in November for spring semester).
- Students will receive an email with instructions and a website link to register online.
- Minimum courses to be taken per semester:
  - *Undergraduate programme level 3* : 6 business courses
  - *Undergraduate programme level 4* : 3 business courses
  - *Undergraduate programme taught in French* : 3 business courses
  - *Postgraduate programme level 5* : 3 business courses
  - *Double degree* seeking students must follow the requirements for the programme on which they are registered.
- No changes in courses will be accepted (unless scheduling clashes occur).

## Grading system

ECTS Grades		Grade Point	Rennes School of Business Grades
A	Excellent	5	70% or above
B	Very Good	4	65% to 69%
C	Good	3	58% to 64%
D	Satisfactory	2	50% to 57%
E	Sufficient	1	40% to 49%
Fx	Fail	-	30% to 39%
F	Fail	-	Below 30%

## ECTS Credits

- Undergraduate programme level 3 and IBPM programme : 4 ECTS credits per subject
- Undergraduate programme level 4: 5 ECTS credits per subject
- Postgraduate programme level 5 and MSc: 6 ECTS credits per subject
- French language class (optional): 3 ECTS credits / semester
- French culture class (optional): 3 ECTS credits / semester
- International Summer programme in Responsible Management: 6 ECTS credits / 2 weeks

NB: 30 ECTS are usually equivalent to 15 US credits or 60 UK (CATS) credits.

## Cost of living

Please find below a very approximate budget for a student in Rennes. Students must have enough money available for their arrival in France as there may be a 3 week delay for obtaining a chequebook and credit card after opening a bank account.

Room*	€350 – 500€ / month on average + 1 month rent deposit (refundable)
Food	€150-200 / month
Personal expenses	€100
Bus pass	€31,70 / month
Student Health Insurance	€215 (price for 2016/2017) – <i>this year's price to be announced</i>
Complementary Health Insurance	€100 / year
Civil responsibility	€40 / year
Residence Permit (for students with long-stay visa)	€60 / year
<b>Average Total per month</b>	<b>Around €700 excluding travel</b>

\*European students and non-European students with a Visa « ETUDIANT » can apply for government help (housing allowance) 50 - 160€ per month depending on the accommodation chosen.

## Housing

### ✓ Rennes School of Business housing platform

You will find many offers located near the campus from private landlords, halls of residency and real estate agencies on the platform: <http://housing.esc-rennes.com/fr/esc-rennes/>

You can make your reservation request directly on the platform with your rental file. The accommodation team will send you the enrolment key allowing you to login on the platform once you will have enrolled at Rennes School of Business. If you have any questions, do not hesitate to contact the platform team via the online Chat.

## Insurance

### ✓ Travel insurance

Students must make sure they have taken out travel insurance with emergency medical evacuation in case of serious health problems, accident, etc., before leaving their countries. *NB: Visa requirements often include emergency medical evacuation and repatriation insurance.*

### ✓ Health insurance

All students are required by French law to take out the French Student Health Insurance (fees for 2016/2017: 215€ per academic year). Only students from the European Community are exempt providing they can produce a nominative and valid EHIC card (European Health Insurance Card) for the length of their studies in Rennes.

Private insurance will not replace the French Student Health Insurance and will be considered as complementary. It is illegal for students to attend French universities if they do not have the Health Insurance mentioned above.

### ✓ Accommodation insurance

French law stipulates that all persons who rent accommodation must have civil responsibility and third party insurance for their address in France; some property owners include this in their «rental package». If not, the students can buy this from their French bank or health insurance companies.

## Visa

All non-European students will have to apply for a visa. Please check with your nearest Campus France agency, French Embassy or Consulate.

✓ Only for students with a Visa with "ETUDIANT" written on it: the OFII form will enable the students to travel in Schengen-member countries and will entitle them to the housing allowance. If they do not go through this formality, they may not be able to re-enter France in the future.

✓ Upon acceptance at Rennes School of Business, students will receive the official acceptance letter in English, its translation into French (for visa purposes) and an additional letter in French for the Embassy / Campus France agency.

## Welcome on arrival

The **Well'Come** team is a student association, which welcomes international students and helps them integrate into the school and everyday life in Rennes. The Well'Come team provides a pick-up service to collect students from Rennes' train/bus stations or airport, helps them settle into their accommodation, and it also organises parties, tourist trips (Mont St. Michel, Paris, etc.) and sports events with French students.

## Facilities

4 buildings - International library – Career office – Cafeteria – Sport facilities – Student club - Computing rooms - WIFI access