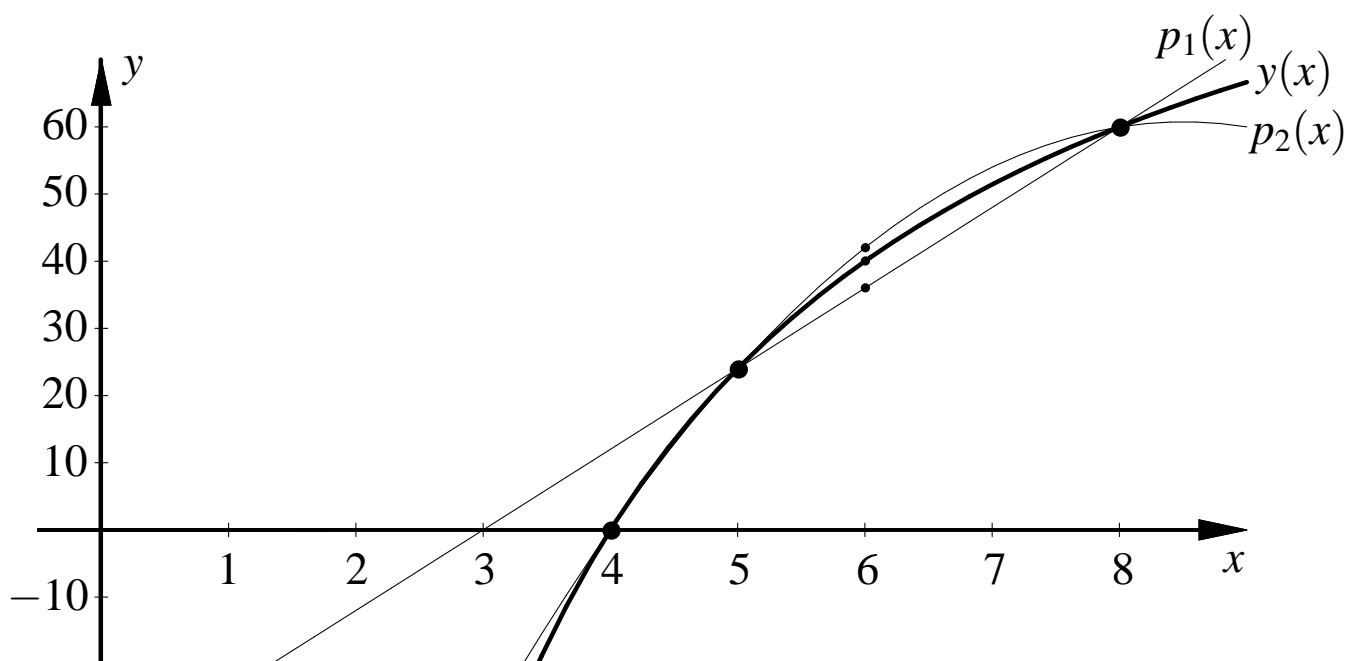


Lineare und quadratische Interpolation

$$y(x) = 120 - \frac{480}{x}$$

$$p_1(x) = 24 \frac{x-8}{5-8} + 60 \frac{x-5}{8-5} = 12x - 36$$

$$\begin{aligned} p_2(x) &= 0 \frac{(x-5)(x-8)}{(4-5)(4-8)} + 24 \frac{(x-4)(x-8)}{(5-4)(5-8)} + 60 \frac{(x-4)(x-5)}{(8-4)(8-5)} \\ &= -3x^2 + 51x - 156 \end{aligned}$$



x	$y(x)$	$p_1(x)$	$p_2(x)$
4	0	12	0
5	24	24	24
6	40	36	42
8	60	60	60